

INSTALLATION NOTES

Curaflex® gasket inserts

- Curaflex® SD



Curaflex® SD

Dear Customer,

Thank you for choosing a quality product from our range.

Please read this message and the included installation instructions in full before installing or processing our products and keep both in a safe place after installation.

Safety instructions:

- Our products may only be installed by persons with the necessary specialist knowledge.
- For your own protection and the protection of third parties, the work area and any necessary pipe trenches must be properly constructed and secured in accordance with the applicable regulations.
- When installing our sealing and fire protection systems, the recognised rules of technology, the relevant regulations of the employers' liability insurance associations, the VDE regulations and the applicable safety and accident regulations must be observed. Parts of the body may be crushed or other serious injuries may occur when tensioning or fixing the products in place.
- The safety data sheets must be observed.
- Check that the delivered product is complete (the scope of delivery is listed separately in the installation instructions) and check all individual parts for any damage. Only undamaged parts may be installed.
- Check that the product is suitable for its intended use using the installation instructions. If there are any particular demands,

please clarify the use of the product with us in advance. Request our checklists for this purpose or download them from www.doyma.com.

Any liability on our part is excluded for misuse!

- Finally, please observe the instructions for the tools and equipment required for installation.

Industrial property rights:

- Our industrial property rights and those of third parties must be observed.

Disposal:

- Please observe the applicable regulations when disposing of components, accessories and packaging.

Terms and conditions of sale:

- The current version of our terms and conditions of sale and delivery shall prevail.



Curaflex® SD

Intended purpose

The Curaflex® SD gasket insert is suitable for sealing pipes/cables with a smooth surface in concrete core bores or pipe sleeves in buildings with fresh concrete bonded waterproofing membrane.

Please note

- Curaflex® gasket inserts are maintenance-free. Once correctly installed, it is not necessary to re-tighten the bolts.
- Before installation, compare the diameter of the pipe and pipe sleeve/core bore with the specifications on the gasket insert.
- Gasket inserts are not secure points or support bearings; they are only used for elastic sealing of pipes.
- Axial movements and bending of the lines are not permitted.
- The sealing of thin-walled and/or foamed plastic pipes must be checked. Contact us if necessary.
- Pipe sleeves must have sufficient rigidity to absorb the compressive forces from the seal insert and a smooth circular inner surface. If the pipe sleeve is damaged, its usability must be checked in advance.
- The sealing to the service pipe/cable/cable protection pipe must be carried out in a WU concrete core bore or in an already installed pipe sleeve.

Scope of delivery

- Curaflex® SD gasket insert
- Curaflex® butyl sealing tape type 1753
- Installation notes

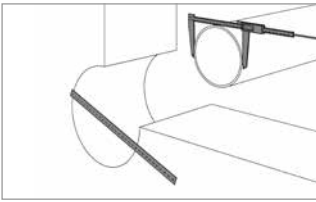
Installation conditions

The pipe/cable must be sealed in a concrete core bore or in an already installed pipe sleeve. The wall in the installation area of the sealing flange must be clean, flat, firm, dust-free and dry. There must be no grooves, creases or other defects on the wall surface in the area of the sealing flange. The gasket insert must be clean and free of dust and grease. When several Curaflex® SD types are arranged, the minimum distance from sealing flange to sealing flange is 50 mm.

Installation steps

1: Take measurements

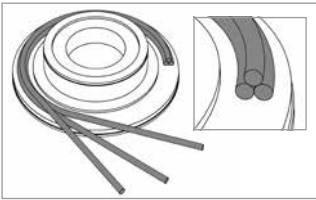
Curaflex® SD



Determine the diameter of the core bore/ pipe sleeve (KB/FR) and the media line (ML) and compare it with the information on the sticker holder.

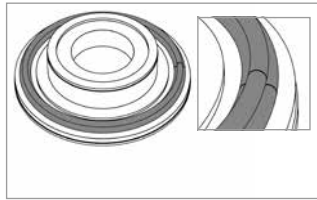
2: Preparatory work

Curaflex® SD



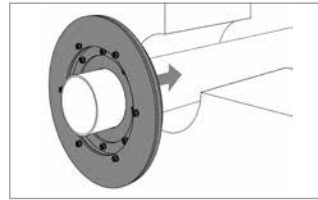
Apply the Curaflex® butyl sealing tape (1753) to the centre of the flat seal. Make sure that two butyl sealing tapes are positioned side by side in the middle. The third butyl sealing tape is placed centrally on the previously applied butyl sealing tape.

Curaflex® SD



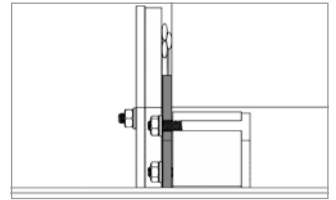
Attention: Make sure that the ends of the Curaflex® butyl sealing tapes (1753) are aligned (without gaps)

Curaflex® SD



Push the Curaflex® SD onto the media line and into the core bore/pipe sleeve until the internal steel ring rests against the wall.

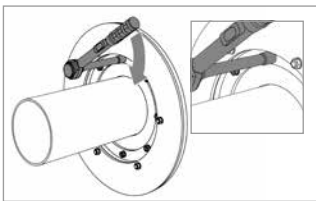
Curaflex® SD



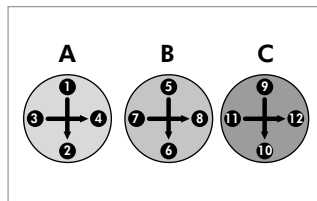
The internal steel ring rests against the wall.

4: Complete the installation

4a. Tightening the internal nuts (Curaflex® SD is tightened to core bore/pipe sleeve (KB/FR) and to media line (ML))

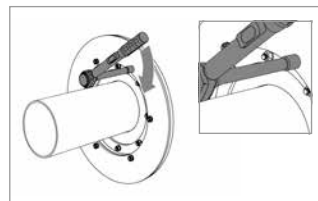


For final installation of the gasket insert, tighten the internal nuts until the adjacent torque is reached (see assignment table).

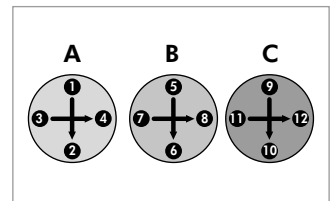


Alternate cross-wise: several turns each in at least three intervals (A>B>C).

4b. Tightening the external nuts (Curaflex® SD sealing flange pressed onto the wall)

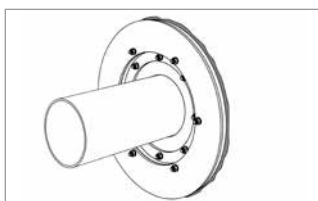


For final installation of the gasket insert, tighten the external nuts until the adjacent torque is reached (see assignment table).



Alternate cross-wise: several turns each in at least three intervals (A>B>C).

4c. Curaflex® SD



Note: installation is correct if butyl oozes out around the outside when tightening the screws.

5: Torque table for Curaflex® SD gasket inserts

Curaflex® SD, Curaflex® SD/M, Curaflex® SD/M/S			
Bolt outside [mm]	Torque external nut [Nm]	Bolt inside [mm]	Torque internal nut [Nm]
M6	5	M6	5
M8	12	M8	12
M8	12	M12	30

Curaflex® SD 40, Curaflex® SD 40/S			
Bolt outside [mm]	Torque external nut [Nm]	Bolt inside [mm]	Torque internal nut [Nm]
M6	5	M6	5
M8	12	M8	7
M8	12	M12	18

Doyma products are always subject to further development. Technical modifications are made without prior notice. DOYMA allows a 25 years guarantee. For more information see www.doyma.com

DOYMA GmbH & Co

SEALING SYSTEMS
FIRE PROTECTION SYSTEMS

Industriestr. 43-57
28876 Oyten

Phone: + 49 (0) 42 07/91 66-300
Fax: + 49 (0) 42 07/91 66-199

www.doyma.de
info@doyma.de