

INSTALLATION INSTRUCTIONS

HKD wall element

- HKD KG wall element
- HKD KG2000 wall element



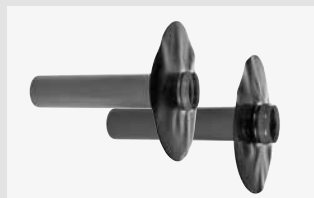
HKD KG wall element / HKD KG2000 wall element



HKD KG / KG2000 double socket



HKD KG / KG2000 plug-in flange



HKD KG / KG2000 flange pipe



HKD slip-on flange

Dear Customer,

Thank you for choosing a quality product from our range.

Please read this message and the included installation instructions in full before installing or processing our products and keep both in a safe place after installation.

Safety instructions:

- Our products may only be installed by persons with the necessary specialist knowledge.
- For your own protection and the protection of third parties, the work area and any necessary pipe trenches must be properly constructed and secured in accordance with the applicable regulations.
- When installing our sealing and fire protection systems, the recognised rules of technology, the relevant regulations of the employers' liability insurance associations, the VDE regulations and the applicable safety and accident regulations must be observed. Parts of the body may be crushed or other serious injuries may occur when tensioning or fixing the products in place.
- The safety data sheets must be observed.
- Check that the delivered product is complete (the scope of delivery is listed separately in the installation instructions) and check all individual parts for any damage. Only undamaged parts may be installed.
- Check that the product is suitable for its intended use using the installation instructions. If there are any particular demands,

please clarify the use of the product with us in advance. Request our checklists for this purpose or download them from www.doyma.com.

Any liability on our part is excluded for misuse!

- Finally, please observe the instructions for the tools and equipment required for installation.

Industrial property rights:

- Our industrial property rights and those of third parties must be observed.

Disposal:

- Please observe the applicable regulations when disposing of components, accessories and packaging.

Terms and conditions of sale:

- The current version of our terms and conditions of sale and delivery shall prevail.

Assembly

Installation instructions for:

HKD KG / HKD KG2000 wall element

- Set up the first formwork side.
- Remove the assembly aid from the wall element and nail it to the required position on the formwork.
- Lay the reinforcement and leave a gap around the assembly position. Take into account the concrete cover according to DIN 1045.
- The circumferential distance to the reinforcement, joint plates, or other wall collars must be at least 5 cm.
- The distance to component edges or built-in parts must be at least 15 cm, and the distance to building joints must be at least 30 cm.
- Place the wall element on the fixed mounting cover.
- If necessary, fix the wall element to the reinforcement. Do not fix it to the wall collar with wire.
- Insert the second mounting cover into the wall element.
- Install the final formwork. The pipe penetration must not be sprayed with formwork oil.
- Fill the formwork with concrete in layers and compact it.
- After the minimum formwork periods according to DIN 1045 have elapsed, remove the formwork and remove the mounting covers on both sides of the pipe penetration.
- Insert lip seals into the sleeves of the wall penetration.

HKD KG / HKD KG2000 double socket

- HKD KG-/KG2000-double socket suitable for use with thin-walled components (e.g., pump sumps or light wells).

HKD KG / HKD KG2000 flange pipe

- Create a core hole.
- Remove any existing sealant in the area of the foil flange.
- Mark the dimensions of the foil flange..
- Apply Sikaflex-11 FC Purform to the wall in the area of the foil flange.
- Spread Sikaflex-11 FC Purform over the entire surface with a notched trowel and distribute it in a circular pattern around the core drilling.

- Insert the HKD KG-/KG2000 flange pipe and press the foil flange firmly into place.
- Press the foil flange evenly from the inside to the outside using a pressure roller and allow to cure for 24 hours.
- Apply the welding membrane or thick coating according to the manufacturer's instructions.

HKD KG / HKD KG2000 plug-in flange

- Insert the plug-in flange into the KG element, which has already been set flush with the formwork, so that the foil flange is flush with the surface of the sealing wall.

HKD slip-on flange

- Expose the existing KG or KG2000 pipe penetration and, if necessary, remove any existing sealant in the area of the foil flange.
- Mark the dimensions of the foil flange.
- Apply Sikaflex-11 FC Purform to the wall in the area of the foil flange.
- Spread Sikaflex-11 FC Purform with a notched trowel and distribute it in a circular pattern around the core hole.
- Slide on the HKD KG slip-on flange and press the foil flange firmly into place.
- Press the foil flange evenly with a pressure roller from the inside out and allow to cure for 24 hours.
- Apply the welding membrane or thick coating according to the manufacturer's instructions.
- For hot bonding processes, only heat the welding membrane.

Accessories (optional)

- Sikaflex-11 FC Purform (1-component, moisture-curing, elastic adhesive and sealant)

DOYMA products are continuously being further developed. Technical changes will be performed without prior notice.

Further info at www.doyma.com

DOYMA GmbH & Co

SEALING SYSTEMS
FIRE PROTECTION SYSTEMS

Industriestr. 43-57
28876 Oyten

Phone: 0 42 07/91 66-300
Fax: 0 42 07/91 66-199

www.doyma.de
info@doyma.de