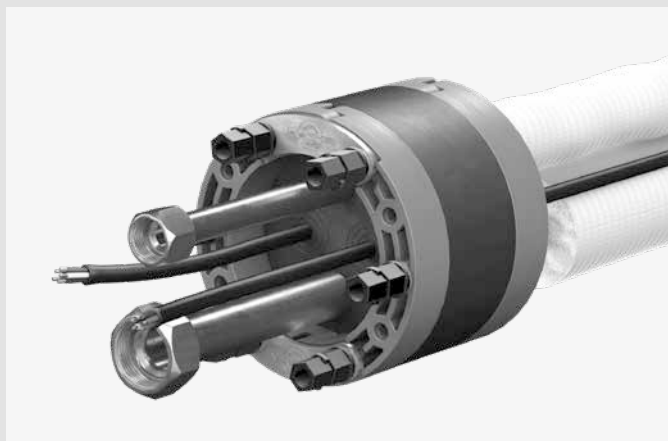


INSTALLATION NOTES

Curaflex Nova® Gasket inserts

- Curaflex Nova® Uno/M/Z



Curaflex Nova® Uno/M/Z

Dear Customer,

Thank you for choosing a quality product from our range.

Please read this message and the included installation instructions in full before installing or processing our products and keep both in a safe place after installation.

Safety instructions:

- Our products may only be installed by persons with the necessary specialist knowledge.
- For your own protection and the protection of third parties, the work area and any necessary pipe trenches must be properly constructed and secured in accordance with the applicable regulations.
- When installing our sealing and fire protection systems, the recognised rules of technology, the relevant regulations of the employers' liability insurance associations, the VDE regulations and the applicable safety and accident regulations must be observed. Parts of the body may be crushed or other serious injuries may occur when tensioning or fixing the products in place.
- The safety data sheets must be observed.
- Check that the delivered product is complete (the scope of delivery is listed separately in the installation instructions) and check all individual parts for any damage. Only undamaged parts may be installed.
- Check that the product is suitable for its intended use using the installation instructions. If there are any particular demands,

please clarify the use of the product with us in advance. Request our checklists for this purpose or download them from www.doyma.com.

Any liability on our part is excluded for misuse!

- Finally, please observe the instructions for the tools and equipment required for installation.

Industrial property rights:

- Our industrial property rights and those of third parties must be observed.

Disposal:

- Please observe the applicable regulations when disposing of components, accessories and packaging.

Terms and conditions of sale:

- The current version of our terms and conditions of sale and delivery shall prevail.

Intended use

The gasket insert Curaflex Nova® Uno/M/Z is especially suitable for the sealing of several pipes and cables with a smooth surface. Curaflex Nova® Uno/M/Z is hinged, to accommodate sealing pipes and cables that have already been laid.

Please note:

- Gasket inserts are not secure points or support bearings; they are only used for elastic sealing of pipes/cables.
- Slight axial movements of the pipes and cables are permitted. Furthermore, fixing tabs are optionally available and can be screwed onto the frame ring (fixing set accessory). These tabs additionally secure the gasket insert when the pressure loads are higher.
- Curaflex® gasket inserts are maintenance-free. Once correctly installed, it is not necessary to re-tighten the bolts.
- The relevant FHRK standard (minimum seal width) can be found on the product label.
- The applicable national regulations governing the laying and filling of pipes and cables must be observed.

Installation conditions

- Breakouts, cracks and/or cavities in core bores in waterproof concrete should be smoothed in advance.
- Pipe sleeves must be rigid enough to withstand the compressive forces from the gasket insert and must have a smooth, circular inner surface. If pipe sleeves are damaged they must be tested in advance for usability.
- Sealing components for the media pipe/cable/cable protection pipe must be installed in a waterproof WR concrete core bore, or in an already installed pipe sleeve. (the position of the gasket insert must be taken into account; see installation step 4).
- The media line (cable or pipe) to be sealed must be cleaned in advance and must not have any axial depressions or elevations in or around the sealing area.
- Compact the substrate and pipe substructure well before laying the pipe/cable, so that no sinking is possible.
- In addition to the usual standard tool, you also need the following tools and equipment in order to properly install the gasket insert:

Tools:

- 1 extension
 - 1 hexagon socket
- (for size, see installation steps)

Equipment:

- Lubricant
- Cleaning agent (solvent-free)
- Calliper gauge
- Cleaning cloth

Scope of delivery

- Curaflex Nova® Gasket insert
- 2 onion ring inserts
- Installation instructions

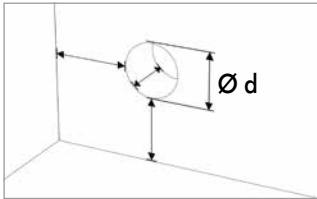
Accessories (optional)

- 4 fixing brackets with screws
- Product No.: 1 88 0 600 004 2 9
- ITL nuts (9 units)
- Article no. 1 88 0 600 009 0 0
- Aquagard primer (Curaflex® 1710), 1 litre for 4.0 m²
- Product No.: 1 99 0 710 000 0 0
- Aquagard primer (Curaflex® 1711), 1/3 litre for 1.5 m²
- Product No.: 1 99 0 711 000 0 0
- Aquagard special paint (Curaflex® 1715), 1 litre for 3.5 m²
- Product No.: 1 99 0 715 000 0 0
- Aquagard special paint (Curaflex® 1716), 1/3 litre for 1.0 m²
- Product No.: 1 99 0 716 000 0 0
- Individual modular sealing ring inserts (optional)
- ZS/G/40/EPDM 4-20
- Product No.: 4 99 8 001 000 0 4

Installation steps

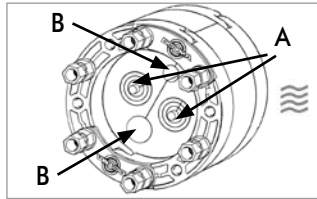
1: Take measurements

Curaflex Nova® Uno/M/Z



Determine the diameter of the core boring or pipe sleeve, and the media line and check it against the information on the carton.

Curaflex Nova® Uno/M/Z



Media lines to be sealed are shown in Table 1.

Media lines to be sealed (outer diameter)

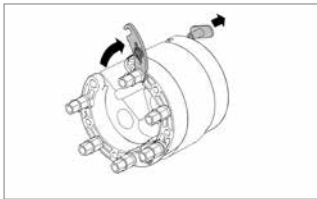
A	B ¹ in [inch]
2x 6-15 mm	1/4 + 1/2
2x 6-15 mm	3/8 + 5/8
2x 6-15 mm	1/4 + 5/8

Table 1

¹ possible media lines - see on the carton

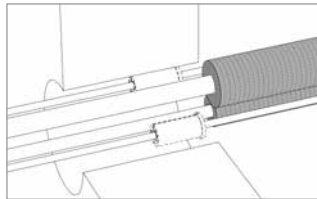
2: Installing the gasket insert

Curaflex Nova® Uno/M/Z



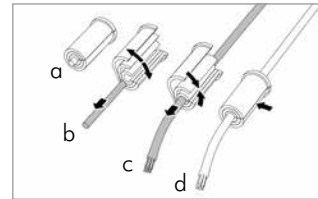
Pull out the quick-release fastener and the opposite pin, unfold the gasket insert and place it and place it around the media line. Close the quick-release fastener. Reinsert the pin.

Insulated pipes



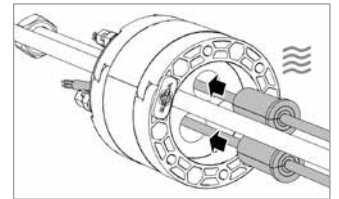
In the case of insulated media lines, remove the insulation in the area of the sealing insert before installation.

Curaflex Nova® Uno/M/Z



Remove the plug (b) from the modular sealing ring (a) and fold the modular sealing ring insert around the cable/pipe (c). Pull out as many layers as needed until the dividing surfaces of the modular sealing ring insert touch but do not overlap when closed around the cable/pipe. The connection point of the modular sealing ring layers may need to be cut with a blade to make it easier to pull the layers out.

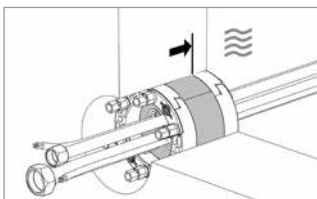
Curaflex Nova® Uno/M/Z



Push the onion ring inserts into the sealing insert from the side facing the water (!).

4a: Installation with WR concrete walls or pipe sleeves

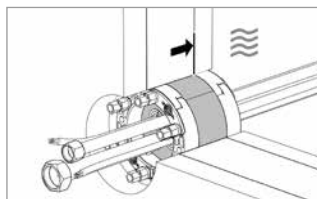
Curaflex Nova® Uno/M/Z



Push the gasket insert into the core bore/pipe sleeve until it stops flush with the outer wall (water/pressure side).

4b: Installation for double/element walls - sealing layer is the in-situ concrete (WR concrete)

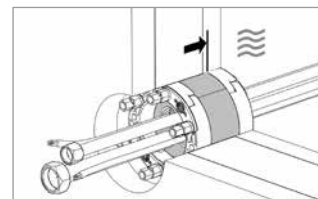
Curaflex Nova® Uno/M/Z



Position the gasket insert in the sealing level of the wall. In case of doubt in terms of where the sealing level is, clarify the procedure with the planner or the wall manufacturer.

4c: Installation for double/element walls - sealing level is in outer concrete facade

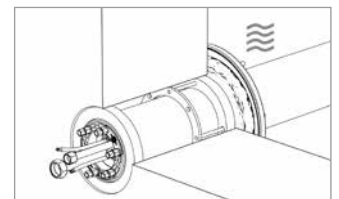
Curaflex Nova® Uno/M/Z



Position the gasket insert in the sealing level of the wall. In case of doubt in terms of where the sealing level is, clarify the procedure with the planner or the wall manufacturer.

4d: Installation in combination with a Quadro-Sicura® Quick/H

Curaflex Nova® Uno/M/Z

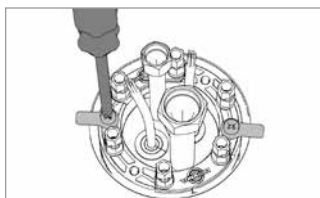


Position the gasket insert to the inside of the basement.

4e: Installation in combination with a Quadro-Sicura® ADS

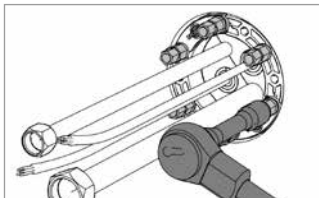
5: Final Assembly

Curaflex Nova® Uno/M/Z

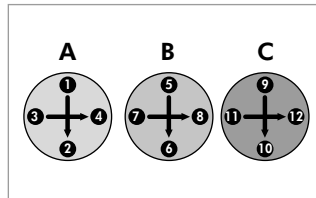


Prior to installation in a Quadro-Sicura® ADS the fixing tabs must be screwed onto the frame ring using a conventional screwdriver.

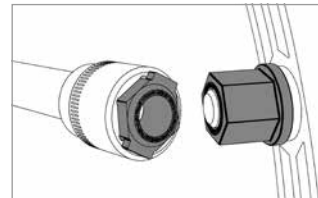
Curaflex Nova® Uno/M/Z



For the final assembly of the gasket insert, tighten the nuts (size 10).



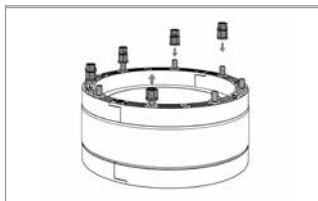
Thereby, proceed alternating: crisscross every few turns in at least 3 intervals (A>B>C).



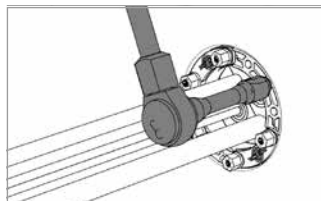
Proceed until the upper nuts twist off (ITL principle: Integrated Torque limiter; no special tools necessary.)

6: Re-tighten gasket insert again (e.g. after disassembly)

Curaflex Nova® Uno/M/Z



Alternately remove already separated nuts crisswise in several intervals. Use new nuts (optionally available), and continue the installation as described under 4, or ...



... Tightening of the still remaining nuts (size 11), alternately crisscross, each with 5 nm torque.

Doyma products are always subject to further development. Technical modifications are made without prior notice. DOYMA allows a 25 years guarantee. For more information see www.doyma.com

DOYMA GmbH & Co

SEALING SYSTEMS
FIRE PROTECTION SYSTEMS

Industriestr. 43-57
28876 Oyten

Phone: + 49 (0) 42 07/91 66-300
Fax: + 49 (0) 42 07/91 66-199

www.doyma.de
info@doyma.de