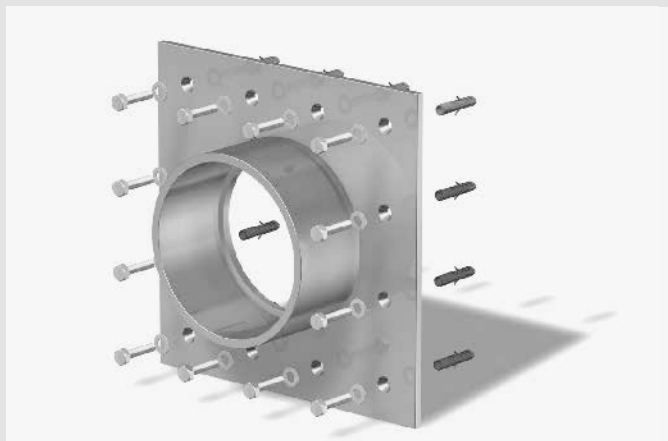


INSTALLATION INSTRUCTIONS

Curaflex® pipe sleeves with fixed flange in combination with butyl sealing tape

- Curaflex® 8000 or 8000/T in combination with butyl sealing tape (1753) as a seal against non-pressing water.



Curaflex® 8000



Curaflex® 8000/T

Dear Customer,

Thank you for choosing a quality product from our range.

Please read this message and the included installation instructions in full before installing or processing our products and keep both in a safe place after installation.

Safety instructions:

- Our products may only be installed by persons with the necessary specialist knowledge.
- For your own protection and the protection of third parties, the work area and any necessary pipe trenches must be properly constructed and secured in accordance with the applicable regulations.
- When installing our sealing and fire protection systems, the recognised rules of technology, the relevant regulations of the employers' liability insurance associations, the VDE regulations and the applicable safety and accident regulations must be observed. Parts of the body may be crushed or other serious injuries may occur when tensioning or fixing the products in place.
- The safety data sheets must be observed.
- Check that the delivered product is complete (the scope of delivery is listed separately in the installation instructions) and check all individual parts for any damage. Only undamaged parts may be installed.
- Check that the product is suitable for its intended use using the installation instructions. If there are any particular demands,

please clarify the use of the product with us in advance. Request our checklists for this purpose or download them from www.doyma.com.

Any liability on our part is excluded for misuse!

- Finally, please observe the instructions for the tools and equipment required for installation.

Industrial property rights:

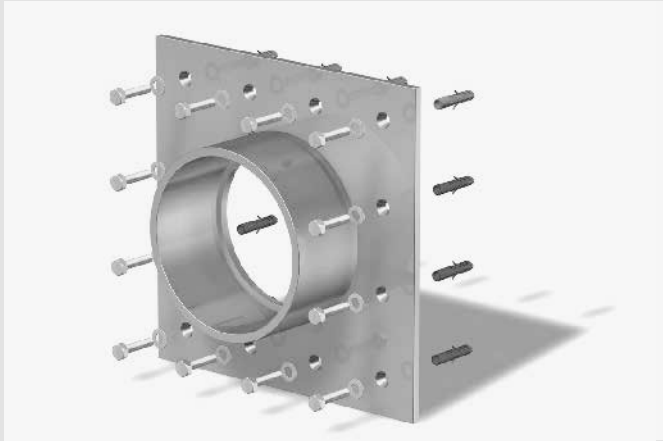
- Our industrial property rights and those of third parties must be observed.

Disposal:

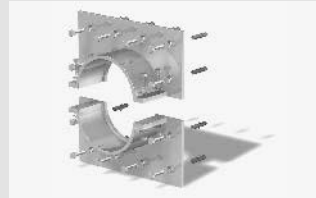
- Please observe the applicable regulations when disposing of components, accessories and packaging.

Terms and conditions of sale:

- The current version of our terms and conditions of sale and delivery shall prevail.



Curaflex® 8000



Curaflex® 8000/T

Intended purpose

Steel pipe sleeve for flange-mounting to the wall, ceiling/floor slab/floor; for accommodating a gasket insert.

Curaflex® 8000 in combination with Curaflex® butyl sealing tape (1753):

Application for sealing buildings with thick coating (black tank) against non-pressing water/soil moisture (not in accordance with DIN 18195/DIN 18533).

The pipe sleeve is mounted on the existing thick coating.

Curaflex® 8000/T:

Application for retrofitting already laid pipe/cable (split version). Otherwise as before.

Please note

- The steel pipe sleeves must be positioned on the side facing the water!
- To seal the annular space between pipe/cable and pipe sleeve, you will need a sealing element.
We recommend installing a Curaflex® gasket insert. If the pipe has already been laid, the steel pipe sleeve must be centred around the pipe and secured in place before being anchored with dowels.
- To ensure that the Curaflex® butyl sealing tape (1753) adheres better to the steel pipe sleeve, the surface must be dry, clean, free of dust and grease before applying the butyl tape.

Scope of delivery

- Curaflex® pipe sleeve
- Curaflex® butyl sealing tape (1753) for sealing the steel pipe sleeve on the wall (on the existing thick coating) or, in the case of split pipe sleeves, for sealing the pipe sleeve parts against each other.
- Fastening material for fixing the pipe sleeve to the wall
- Installation notes

Accessories (optional)

Gasket insert: Curaflex® or Curaflex® Nova

Installation conditions

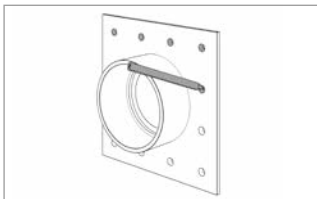
The steel pipe sleeve must be clean and free of dust and grease. If there is already a pipe sleeve in the wall, it must stop flush with the wall. The diameter of the core bore/wall pipe sleeve must be smaller than the diameter of the pipe socket of the steel pipe sleeve. The thick coating must be in good condition and fully cured in the area of the steel pipe sleeve. If the pipe/cable is not centred on the steel pipe sleeve, a custom solution may be necessary upon consultation with DOYMA.

Distances for flange constructions in accordance with DIN 18195/DIN 18533 must generally be arranged as follows: Flange to flange or to other components, e.g. building edges/channels, wall junctions, min. 150 mm in case of npr. w. (non-pressing water). Expansion joints: In case of npr. w., distances of at least 300 mm must be maintained unless a greater distance is required for processing reasons.

Installation steps

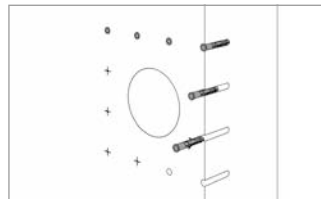
Curaflex® 8000 with butyl sealing tape

1 Mark dowel holes



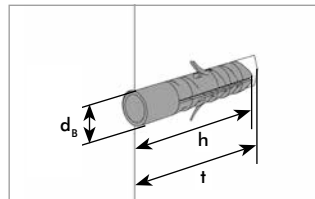
Position the steel pipe sleeve on the wall and mark the dowel holes.
Important: if piping is already installed, position the pipe sleeve so that it is centred on the pipe!

Drill 2 dowel holes



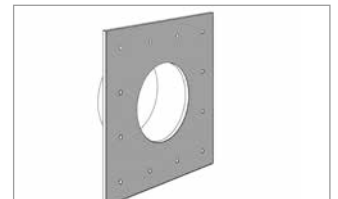
Drill the holes and insert the dowels.

3 Bores for the fixed flange



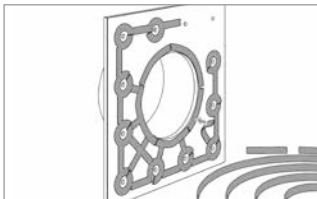
Minimum drill hole depth $d \geq 90$ mm.
 Dowel length $h = 80$ mm. Drill/hole diameter $d_B = 10$ mm.

4 Pretreat steel pipe sleeve



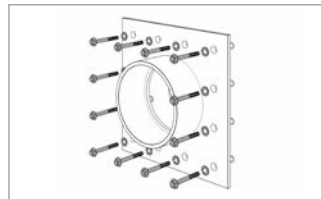
The surface must be dry, clean and free of dust and grease before the butyl tape is applied.

5 Stick on butyl sealing tape



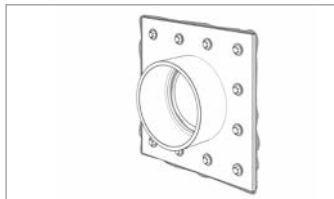
Stick the Curaflex® Butyl sealing tape (1753) to the back of the steel plate (opposite the sleeve) in a spider web format. Leave a diameter of approx. 25 mm free in the area around the holes.
 Here, the collar of the dowel is positioned as a spacer between the wall and the plate. Seamless application of the sealing tape is a prerequisite for a durable seal.

6 Mount the pipe sleeve on the wall



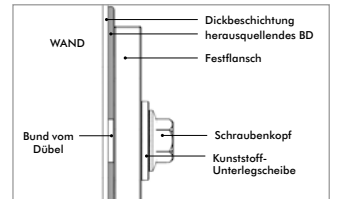
Slide the plastic washer onto the special screw and mount the steel pipe sleeve onto the wall by positioning it and tightening the screws.

7 Completely mounted steel pipe sleeve



Note: The installation is correct when butyl oozes out around the inside and outside when the screws are tightened. Remove any butyl protruding from the sleeve.

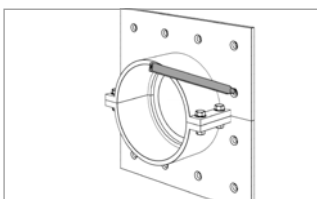
8 Inspection



Important: Oozing out butyl sealing tape (BD).

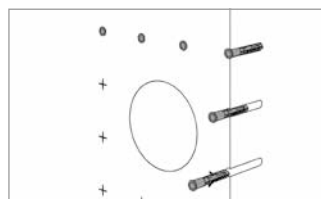
Curaflex® 8000/T with butyl sealing tape

1 Mark dowel holes



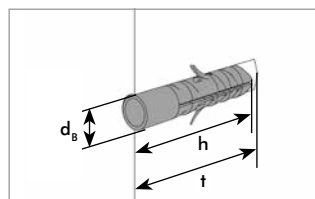
Position the split steel pipe sleeve mounted together on the wall and mark the dowel holes.
Important: If the piping is already installed, it is essential to position the steel pipe sleeve so that it is centred on the pipe!

Drill 2 dowel holes



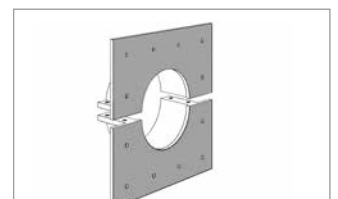
Drill the holes and insert the dowels.

3 Bores for the fixed flange



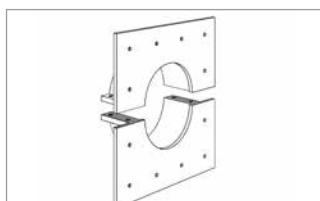
Minimum drill hole depth $d \geq 90$ mm.
 Dowel length $h = 80$ mm. Drill hole diameter $d_B = 10$ mm.

4 Pretreat steel pipe sleeve



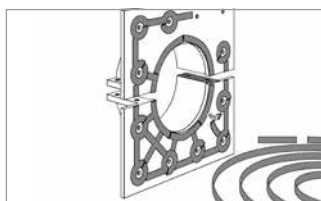
The surface must be dry, clean and free of dust and grease before the butyl tape is applied.

5 Pretreat dividing lugs



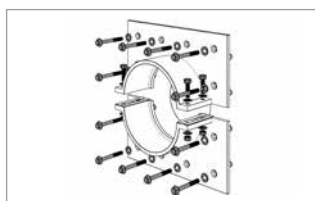
The dividing lugs must be dry, clean and free of dust and grease before the butyl tape is applied.

6 Stick on butyl tape



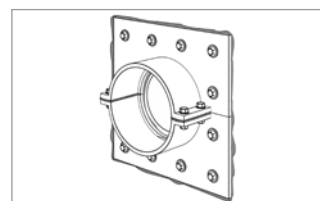
Stick the butyl sealing tape to the back of the steel plate (opposite the sleeve) in a spider web format. Leave a diameter of approx. 25 mm free in the area around the holes. Here, the collar of the dowel is positioned as a spacer between the wall and the plate.
 Stick the butyl sealing tape to the dividing lugs in a spider web format.
 Seamless application of the sealing tape is a prerequisite for a durable seal.

7 Screwing the steel pipe sleeve



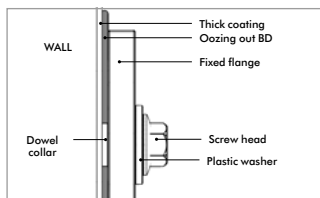
Tighten the dividing lugs by screwing them. Slide the plastic washer onto the special screw and mount the steel pipe sleeve onto the wall by positioning it and tightening the screws.

8 Completely mounted steel pipe sleeve



Note: The installation is correct when butyl oozes out around the inside and outside when the screws are tightened. Remove any butyl protruding from the sleeve.

9 Inspection



Important: Oozing out butyl sealing tape (BD).

DOYMA products are continuously being further developed. Technical changes will be performed without prior notice.
 25 year warranty on all DOYMA products. **More information at www.doyma.com**

DOYMA GmbH & Co

SEALING SYSTEMS
 FIRE PROTECTION SYSTEMS

Industriestr. 43-57
 28876 Oyten

Phone: 0 42 07/91 66-300
 Fax: 0 42 07/91 66-199

www.doyma.de
info@doyma.de