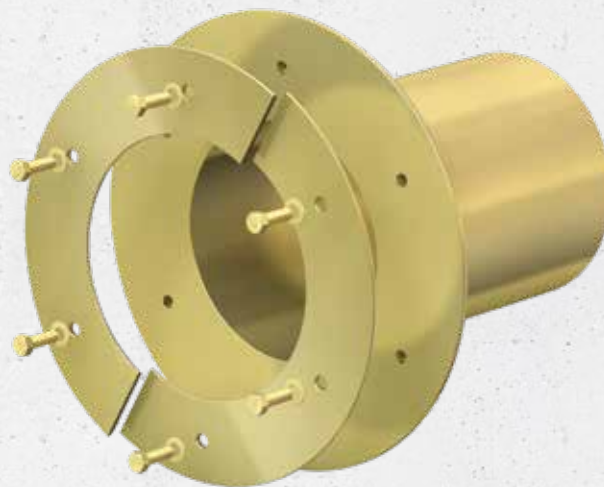


Curaflex® 5000

NON-PRESSING WATER

- Cut-out for duct systems
- Use in unfinished structures
- For use with tanking membranes or thick coating (black tank)
- With fixed and loose flange
- For high static load capacity



25 years guarantee

PRODUCT ADVANTAGES

- Optimally designed inner wall for holding the DOYMA sealing systems and building services duct system
- Steel pipe sleeve for high static loads with integrated fixed and loose flange (loose flange split)
- For flush mounting into the formwork

TECHNICAL DETAILS

- With fixed and loose flanges in accordance with DIN 18533
- Gas and watertight
- Radon proof – according to FHRK information sheet MB101
- Depending on the tanking membrane, installed with packings (1775) arranged on both sides where there is thin and hard film, or accessories where there is a thick coating (1776): sanding of the contact surfaces of the fixed/loose flange

MATERIAL

- GGV triple corrosion protection coating; optionally made of stainless steel 1.4301 (V2A) or 1.4571 / 1.4404 (V4A)
- Contact surfaces sanded where a thick coating is yet to be applied
- Delivery includes fixing material for solid walls

Inner diameter of pipe sleeve D_1 [DN in mm]	Outer diameter of fixed flange D_5 max. [mm]	Standard lengths L_1 [mm]
80	260	300
100	280	300
125	300	300
150	330	300
200	380	300
250	430	300
300	480	300
350	530	upon request
400	580	
450	630	
500	680	
600	780	
700	880	

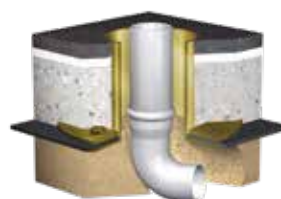
Further material combinations and dimensions available upon request.



ACCESSORIES (OPTIONAL)*

- packings (1775) for thin, hard films
- Accessories for thick coating
- Punch for thick coating

* see accessories section



Variant: Curaflex® 5000/U

